

Summary of Financial Results for 1Q of FY2024

(from April 1, 2023 to June 30, 2023)

July 27, 2023
TAIHO KOGYO CO., LTD
(Code number: 6470)

(Million yen)

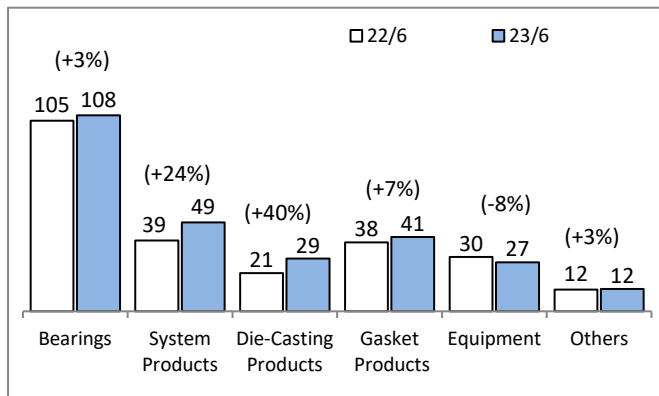
1. Consolidated Financial Results

	2022.4~2022.6		2023.4~2023.6		Increase/Decrease		2023.4~2024.3		FY2022/FY2023	
	Results	Profit rate(%)	Results	Profit rate(%)	Results	Rate of change	Forecast	Profit rate(%)	Increase/Decrease	Rate of change
Net Sales	24,700	-	26,867	-	2,167	8.8	114,000	-	8,838	8.4
Operating Income(Loss)	52	0.2	22	0.1	-29	-56.0	2,400	2.1	1,705	245.8
Ordinary Income(Loss)	531	2.1	502	1.9	-28	-5.4	2,200	1.9	988	81.6
Profit(Loss) Attributable to Owners of Parent	305	1.2	338	1.3	33	11.0	1,200	1.1	800	200.3
Foreign Exchange Rate	JPY/US\$	130	138		+8		130		-5	
	JPY/Euro	138	150		+12		140		-1	
Earnings per share(JPY)		10.54	11.75		+1.21		41.66		27.80	
Return on equity		0.5%	0.5%		+0.0%		1.8%		1.2%	
Number of Consolidated Subsidiaries		14	14		0		14		0	

2. Summary of Sales

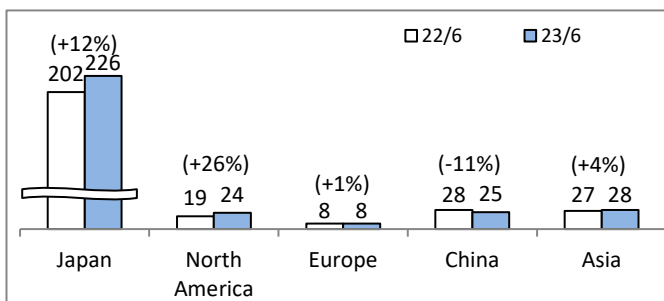
① Sales by products

(100 Million yen)



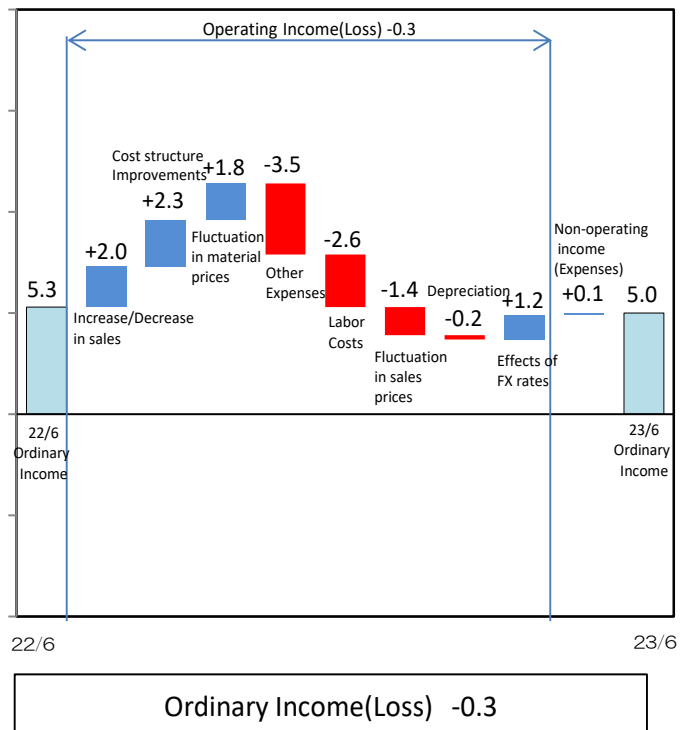
② Sales by region (Before elimination of intercompany sales)

(100 Million yen)



3. Fluctuation factors of the operating/ordinary income

(100 Million yen)



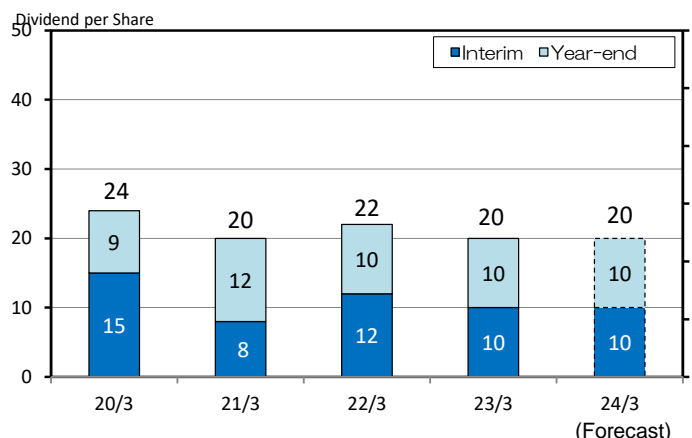
4. Consolidated Balance Sheet

(100 Million yen)

Assets	2023			2022			Change	Liabilities, Net assets	2023			2022			Change
	23/3	23/6	Change	23/3	23/6	Change			23/3	23/6	Change	23/3	23/6	Change	
Current assets	588	611	23	356	248	-107		Current liabilities	356	248	-107				
Cash and deposits, securities	169	193	23	134	133	0		Trade payables	134	133	0				
Trade receivables	231	231	0	135	18	-117		Short-term borrowings	135	18	-117				
Inventories	162	157	-5	86	97	10		Others	86	97	10				
Others	25	29	4	110	237	127		Non-current liabilities	110	237	127				
				Long-term borrowings	91	219	127								
				Others	19	18	0								
				(Total liabilities)	466	486	19								
Non-current assets	549	556	6	623	623	0		Shareholders' equity	623	623	0				
Property, plant and equipment	451	450	0	41	50	9		Total accumulated other comprehensive income	41	50	9				
Intangible assets	16	16	0	1	1	0		Share acquisition rights	1	1	0				
Investments and other assets	80	88	7	5	5	0		Non-controlling interests	5	5	0				
				(Total net assets)	670	681	10								
	1,137	1,167	30	1,137	1,167	30									

5. Dividends

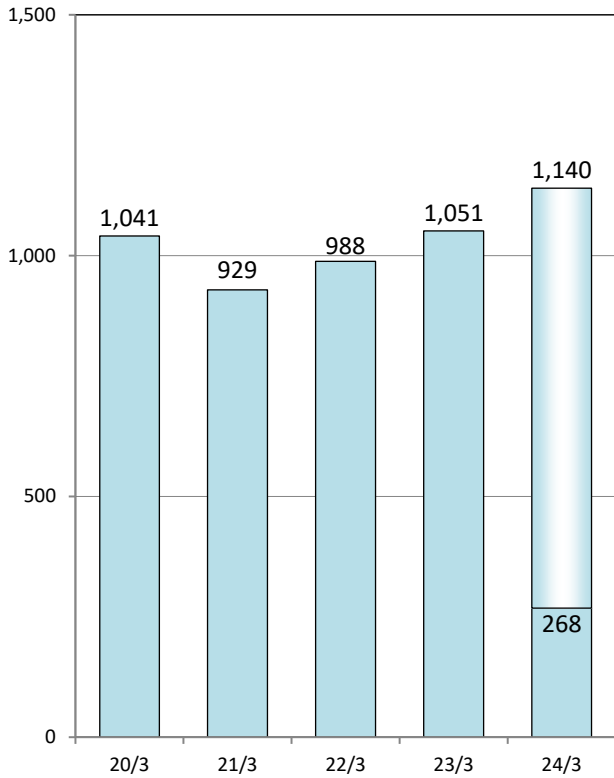
Dividend per Share (JPY)



6. Financial Results

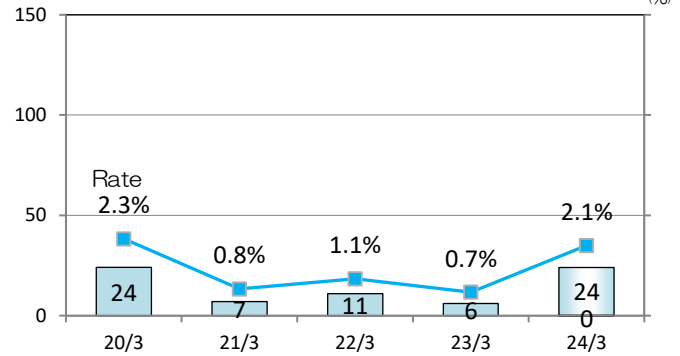
(1) Net Sales

(100Million yen)



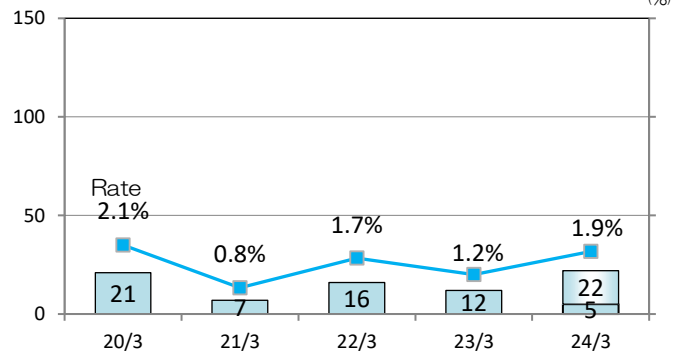
(2) Operating Income (Loss)

(100Million yen)
(%)



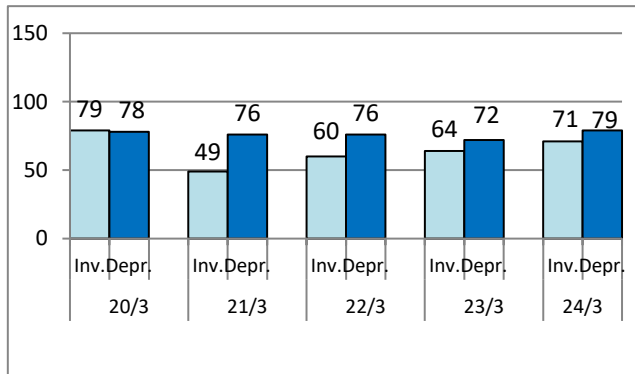
(3) Ordinary Income (Loss)

(100Million yen)
(%)



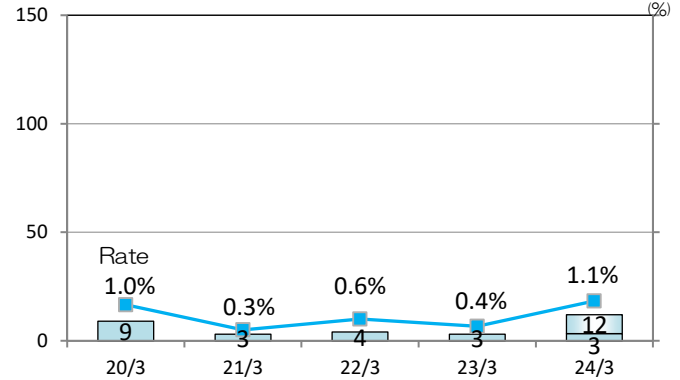
7. Capital Investment and Depreciation

(100Million yen)



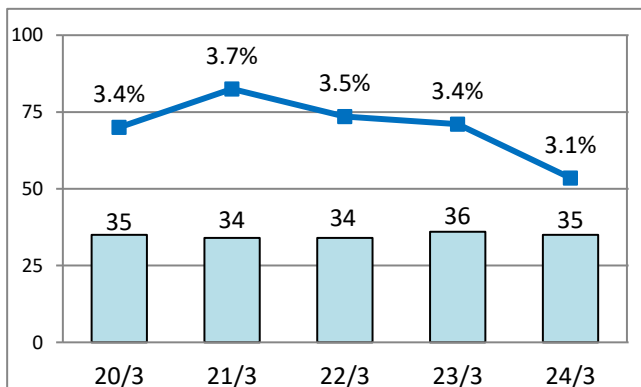
(4) Profit(Loss) Attributable to Owners of Parent

(100Million yen)
(%)



8. Research and Development Expenditure

(100Million yen)



9. Segment Information

(100Million yen)

	2022.4~ 2022.6		2023.4~ 2023.6		Increase/ Decrease	
	Net Sales	Operating Income	Net Sales	Operating Income	Net Sales	Operating Income
Automotive Parts	216	12	240	11	24	-1
Equipment	30	2	27	3	-2	1
Others	0	0	0	-0	0	-0
Common costs(*)	-	-14	-	-14	-	-0
Total	247	0	268	0	21	-0

* Common costs are principally general administrative expenses not attributable to reporting segments.