

Summary of Financial Results for 1Q of FY2022

(from April 1, 2021 to June 30, 2021)

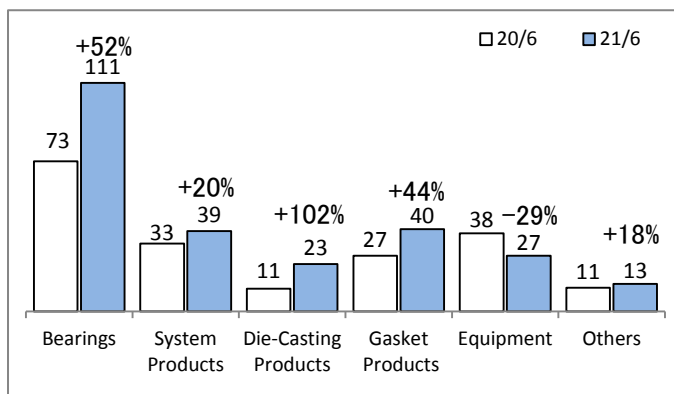
July 29, 2021
TAIHO KOGYO CO., LTD
(Code number: 6470)
(Million yen)

1. Consolidated Financial Results

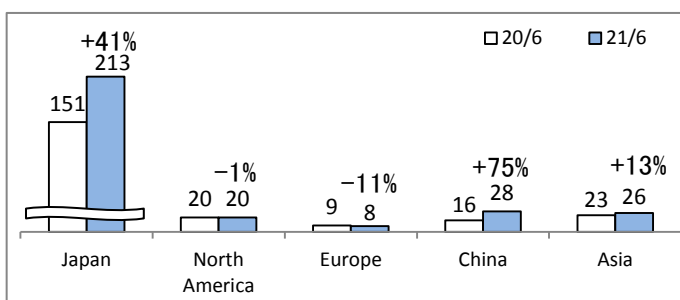
	2020.4~2020.6		2021.4~2021.6		Increase/Decrease		2021.4~2022.3		FY2021/FY2022	
	Results	Profit rate(%)	Results	Profit rate(%)	Results	Rate of change	Forecast	Profit rate(%)	Increase/Decrease	Rate of change
Net Sales	19,538	-	25,514	-	5,976	30.6	101,000	-	8,054	8.7
Operating Income(Loss)	-1,724	-8.8	1,070	4.2	2,795	-	3,500	3.5	2,790	392.9
Ordinary Income(Loss)	-1,691	-8.7	1,136	4.5	2,828	-	3,600	3.6	2,812	356.3
Profit(Loss) Attributable to Owners of Parent	-1,792	-9.2	963	3.8	2,755	-	2,800	2.8	2,499	830.9
Foreign Exchange Rate	JPY/US\$	108	110	+2			105	-1		
	JPY/Euro	121	132	+11			120	-3		
Earnings per share(JPY)		-61.77	33.22	94.99			96.51	86.14		
Return on equity		-2.9%	1.5%	4.4%			4.4%	3.9%		
Number of Consolidated Subsidiaries		14	14	0			14	0		

2. Summary of Sales

① Sales by products (100Million yen)

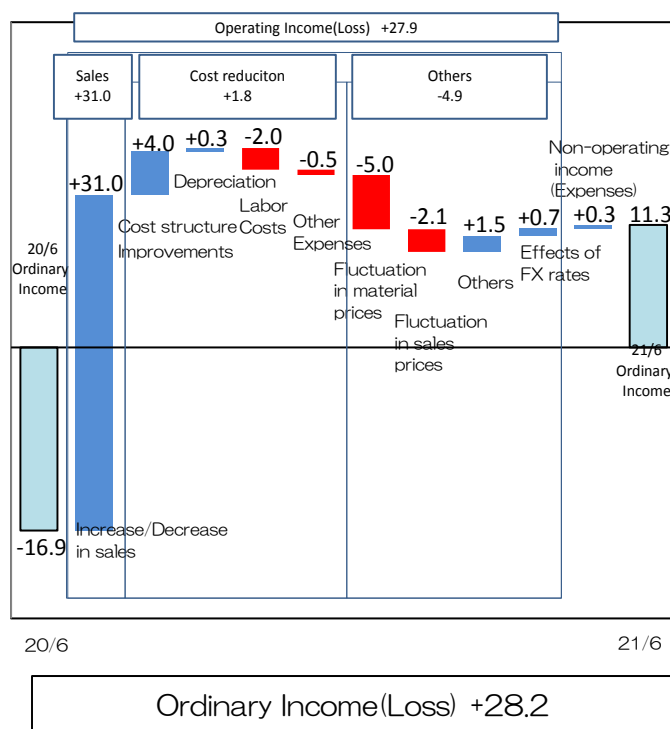


② Sales by region (Before elimination of intercompany sales) (100Million yen)



3. Fluctuation factors of the operating/ordinary income

(100Million yen)



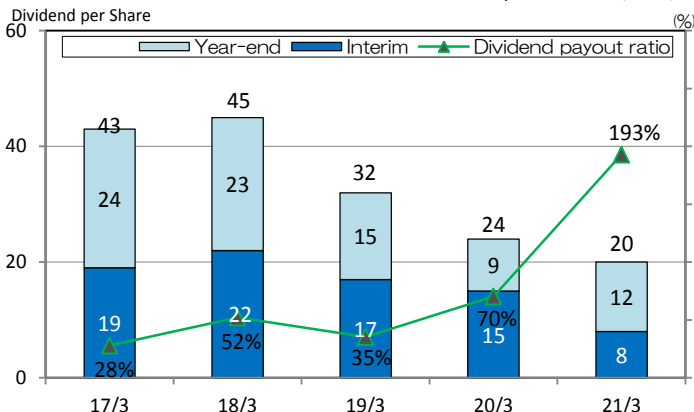
4. Consolidated Balance Sheet

(100Million yen)

Assets	2020.4~2020.6			2021.4~2021.6			Change	Liabilities, Net assets		
	20/4	21/4	21/6	20/4	21/4	21/6				
Current assets	577	611	33	231	252	20				
Cash and deposits, securities	213	237	24	115	119	4				
Trade receivables	226	225	-1	37	39	1				
Inventories	113	125	11	78	93	14				
Others	24	23	-1	262	254	-7				
				Long-term borrowings	244	238	-5			
				Others	17	15	-1			
				(Total liabilities)	493	507	13			
Non-current assets	559	558	-1	Shareholders' equity	627	633	6			
Property, plant and equipment	468	465	-3	Total accumulated other comprehensive income	8	20	11			
Intangible assets	20	19	0	Share acquisition rights	1	1	0			
Investments and other assets	71	73	2	Non-controlling interests	6	6	1			
				(Total net assets)	643	662	18			
	1,137	1,169	32		1,137	1,169	32			

5. Dividends

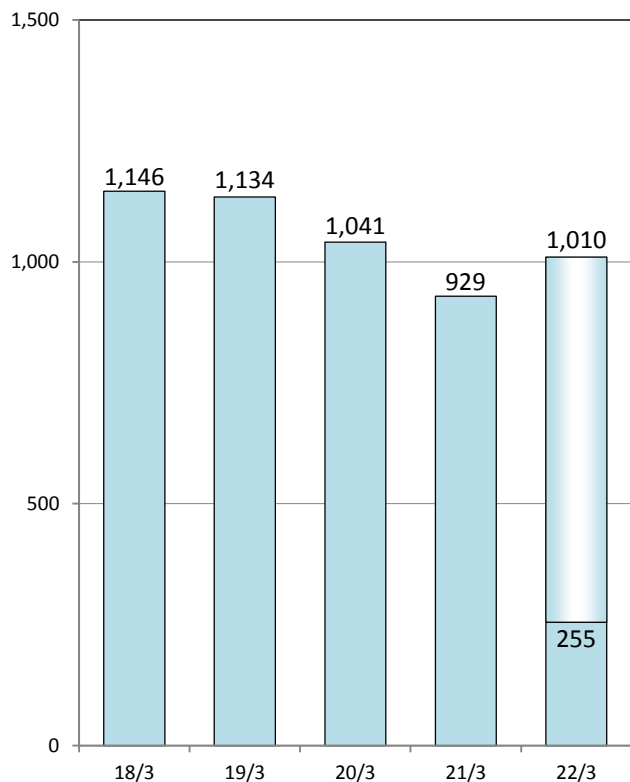
Dividend per Share (JPY)



6. Financial Results

(1) Net Sales

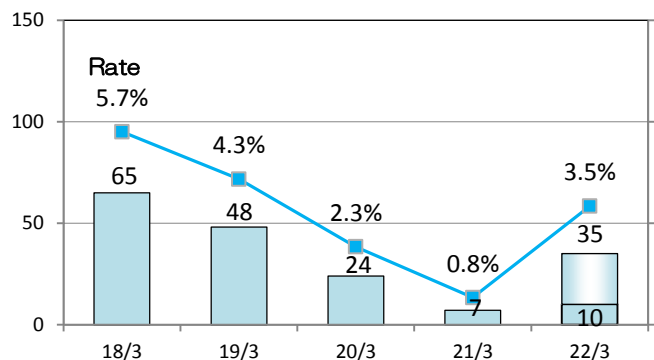
(100Million yen)



(2) Operating Income (Loss)

(100Million yen)

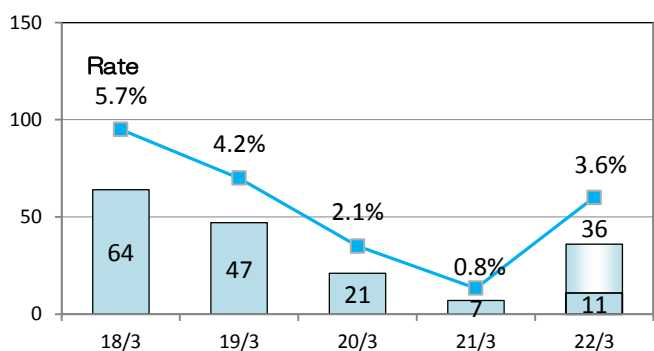
(%)



(3) Ordinary Income (Loss)

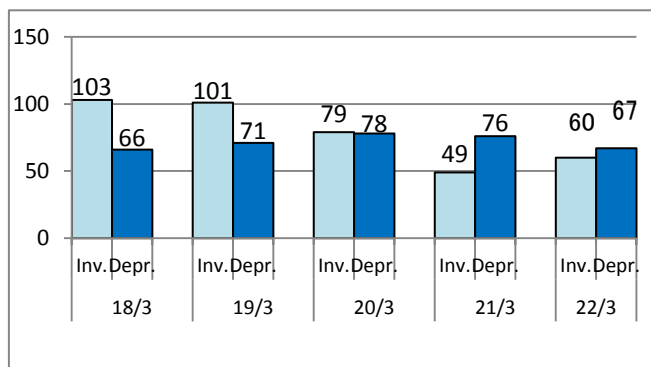
(100Million yen)

(%)



7. Capital Investment and Depreciation

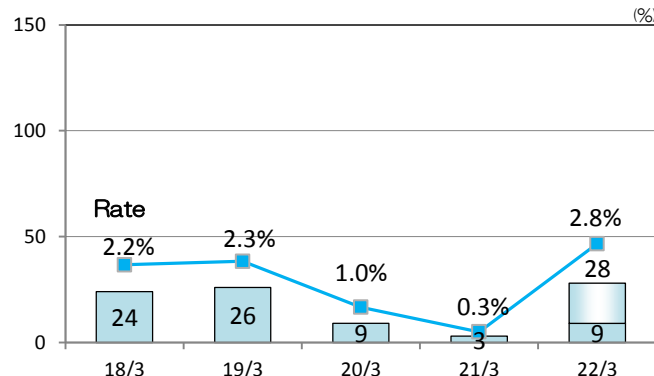
(100Million yen)



(4) Profit(Loss) Attributable to Owners of Parent

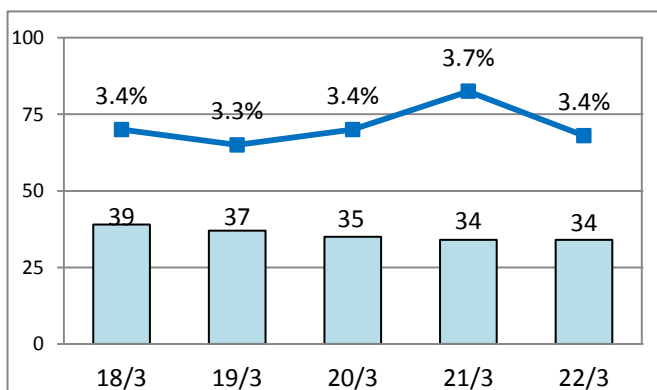
(100Million yen)

(%)



8. Research and Development Expenditure

(100Million yen)



9. Segment Information

(100Million yen)

	2020.4~ 2020.6		2021.4~ 2021.6		Increase/ Decrease	
	Net Sales	Operating Income	Net Sales	Operating Income	Net Sales	Operating Income
Automotive Parts	156	-5	227	22	70	28
Equipment	38	2	27	2	-11	0
Others	0	-0	0	0	0	0
Common costs(*)	-	-13	-	-14	-	-0
Total	195	-17	255	10	59	27

* Common costs are principally general administrative expenses not attributable to reporting segments.