

# Summary of Financial Results for FY2022

(from April 1, 2021 to March 31, 2022)

April 27, 2022  
TAIHO KOGYO CO., LTD  
(Code number: 6470)

(Million yen)

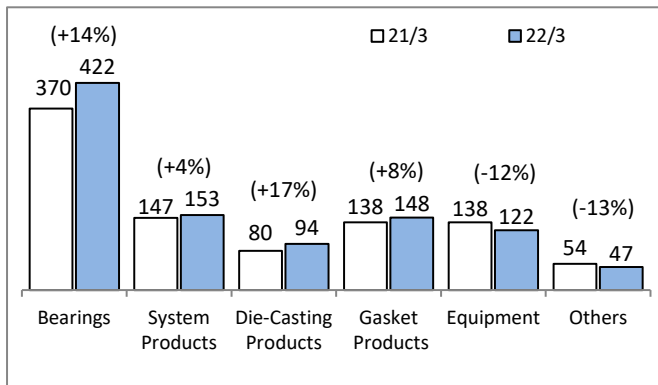
## 1. Consolidated Financial Results

	2020.4~2021.3		2021.4~2022.3		Increase/ Decrease		Forecast		2022.4~2023.3
	Results	Profit rate(%)	Results	Profit rate(%)	Results	Rate of change	Forecast	Profit rate(%)	
Net Sales	92,945	-	98,820	-	5,875	6.3	98,000	-	Forecasts for the consolidated financial results for the fiscal year ending March 31, 2023 remains undetermined.
Operating Income	710	0.8	1,108	1.1	398	56.1	1,300	1.3	
Ordinary Income	788	0.8	1,650	1.7	861	109.2	1,800	1.8	
Profit(Loss) Attributable to Owners of Parent	300	0.3	621	0.6	320	106.6	500	0.5	
Foreign Exchange Rate	JPY/US\$	106	112	+6	110				
	JPY/Euro	123	131	+8	130				
Earnings per share(JPY)		10.37	21.42	11.5	17.23				
Return on equity		0.5%	1.0%	0.5%	0.8%				
Number of Consolidated Subsidiaries		14	14	0	14				

## 2. Summary of Sales

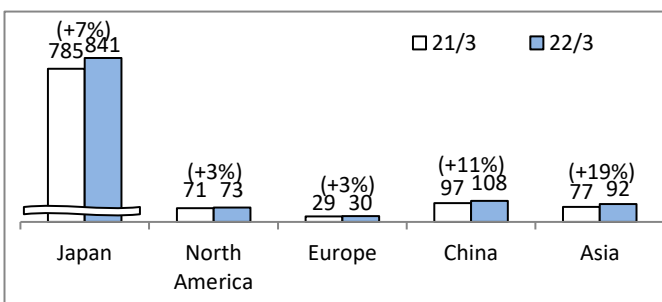
### ① Sales by products

(100 Million yen)



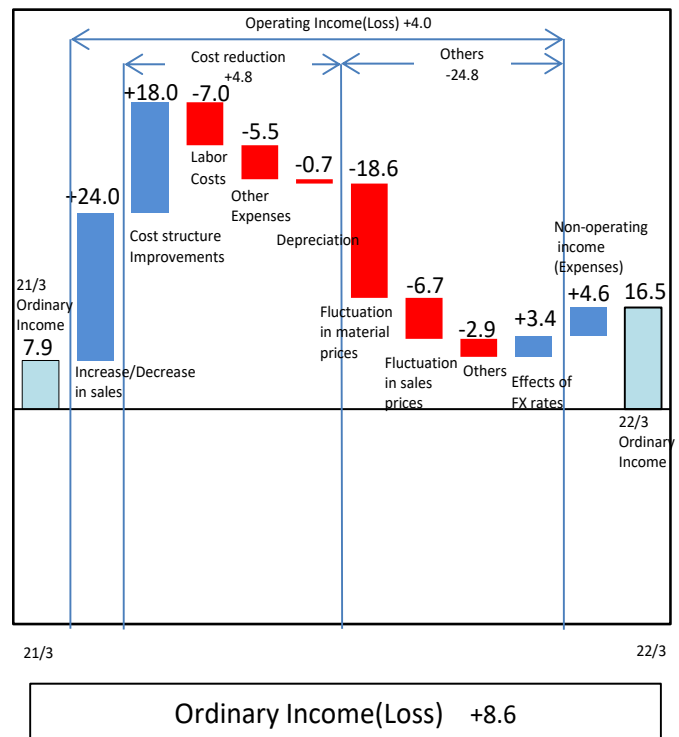
### ② Sales by region (Before elimination of intercompany sales)

(100 Million yen)



## 3. Fluctuation factors of the operating/ordinary income

(100 Million yen)



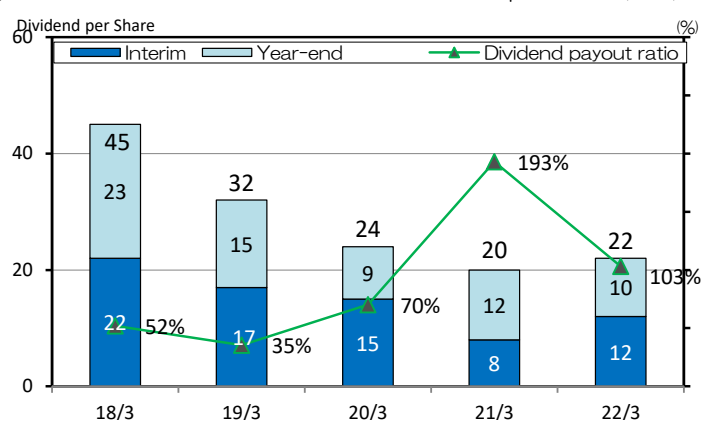
## 4. Consolidated Balance Sheet

(100 Million yen)

Assets	2020.4~2021.3			2021.4~2022.3			Change	Liabilities, Net assets	2020.4~2021.3			2021.4~2022.3			Change
	20/4~21/3	21/4~22/3	Change	20/4~21/3	21/4~22/3	Change			20/4~21/3	21/4~22/3	Change				
<b>Current assets</b>	577	593	15	<b>Current liabilities</b>	231	246	14								
Cash and deposits, securities	213	202	-10	Trade payables	115	126	10								
Trade receivables	226	224	-2	Short-term borrowings	37	41	4								
Inventories	113	145	31	Others	78	78	0								
Others	24	21	-3	<b>Non-current liabilities</b>	262	234	-27								
				Long-term borrowings	244	211	-32								
				Others	17	22	4								
				(Total liabilities)	493	480	-13								
<b>Non-current assets</b>	559	550	-9	Shareholders' equity	627	626	0								
Property, plant and equipment	468	450	-18	Total accumulated other comprehensive income	8	29	21								
Intangible assets	20	20	0	Share acquisition rights	1	1	0								
Investments and other assets	71	79	8	Non-controlling interests	6	5	0								
				(Total net assets)	643	663	19								
	1,137	1,143	6		1,137	1,143	6								

## 5. Dividends

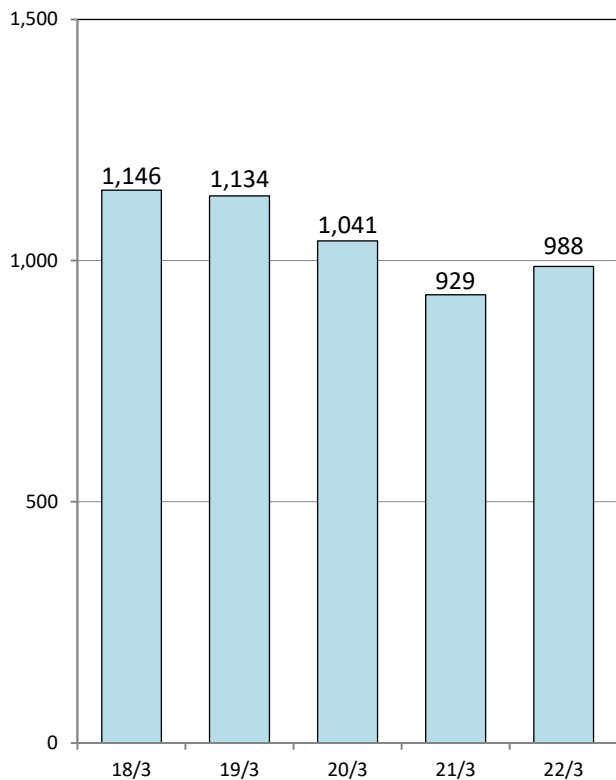
Dividend per Share (JPY)



## 6. Financial Results

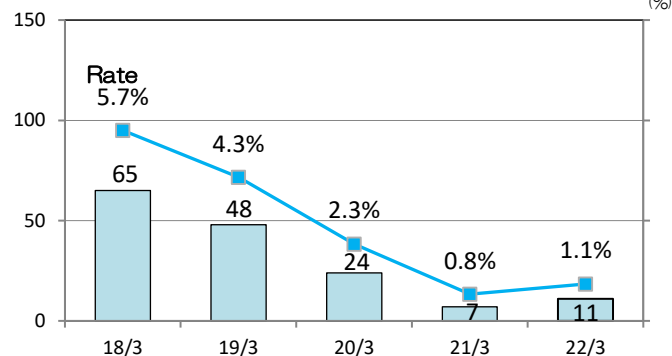
### (1) Net Sales

(100Million yen)



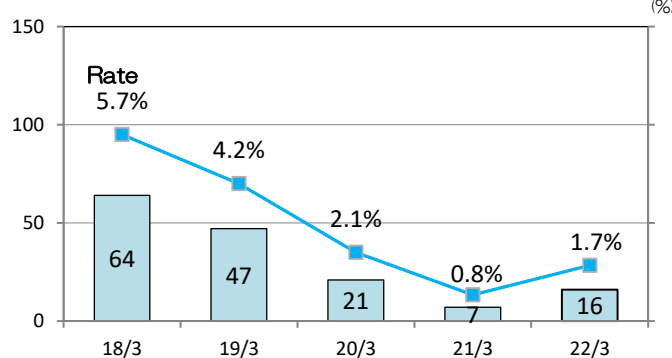
### (2) Operating Income

(100Million yen)



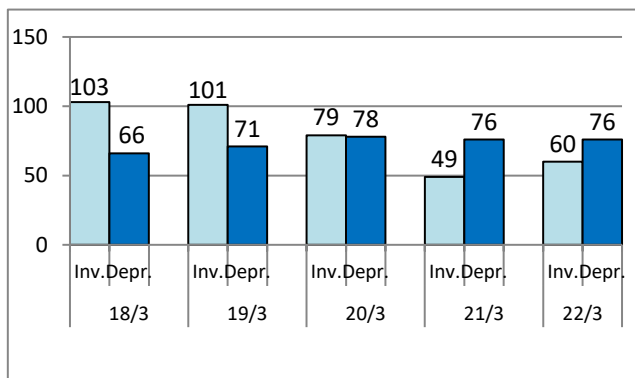
### (3) Ordinary Income

(100Million yen)



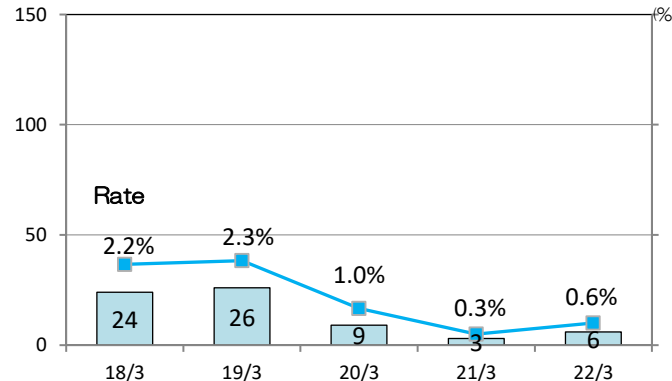
## 7. Capital Investment and Depreciation

(100Million yen)



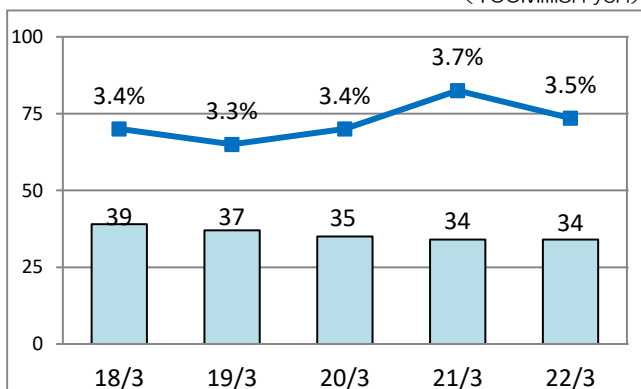
### (4) Profit Attributable to Owners of Parent

(100Million yen)



## 8. Research and Development Expenditure

(100Million yen)



## 9. Segment Information

(100Million yen)

	2020.4~2021.3		2021.4~2022.3		Increase/Decrease	
	Net Sales	Operating Income	Net Sales	Operating Income	Net Sales	Operating Income
Automotive Parts	789	46	863	53	74	7
Equipment	138	12	122	11	-16	-0
Others	1	-0	1	0	-0	0
Common costs(*)	-	-51	-	-54	-	-2
Total	929	7	988	11	58	3

\* Common costs are principally general administrative expenses not attributable to reporting segments.