

Summary of Financial Results for 3Q of FY2023

(from April 1, 2022 to December 31, 2022)

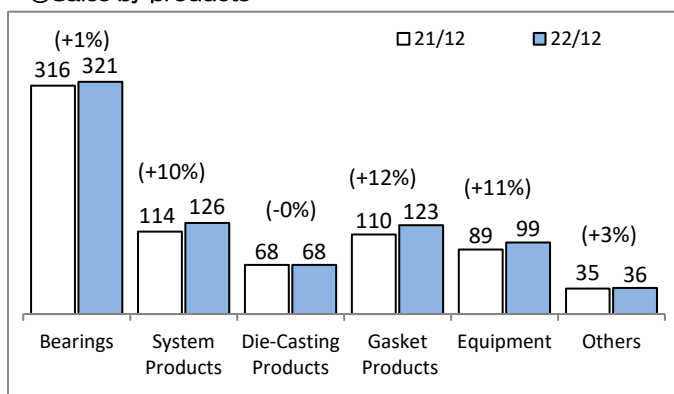
February 2, 2023
TAIHO KOGYO CO., LTD
(Code number: 6470)
(Million yen)

1. Consolidated Financial Results

	2021.4~2021.12		2022.4~2022.12		Increase/Decrease		2022.4~2023.3		FY2022/FY2023	
	Results	Profit rate(%)	Results	Profit rate(%)	Results	Rate of change	Forecast	Profit rate(%)	Increase/Decrease	Rate of change
Net Sales	73,464	-	77,522	-	4,057	5.5	104,000	-	5,179	5.2
Operating Income(Loss)	1,329	1.8	286	0.4	-1,043	-78.5	200	0.2	-909	-82.0
Ordinary Income(Loss)	1,680	2.3	792	1.0	-887	-52.8	600	0.6	-1,051	-63.6
Profit(Loss) Attributable to Owners of Parent	1,604	2.2	350	0.5	-1,253	-78.1	-300	-0.3	-922	-
Foreign Exchange Rate	JPY/US\$ 111		136		+25		135		+23	
	JPY/Euro 131		141		+10		140		+9	
Earnings per share(JPY)	55.31		12.17		-43.14		-10.40		-31.82	
Return on equity	2.5%		0.5%		-1.9%		-0.5%		-1.5%	
Number of Consolidated Subsidiaries	14		14		0		14		0	

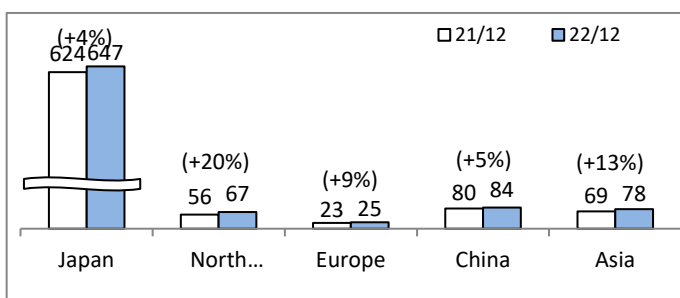
2. Summary of Sales

① Sales by products (100Million yen)



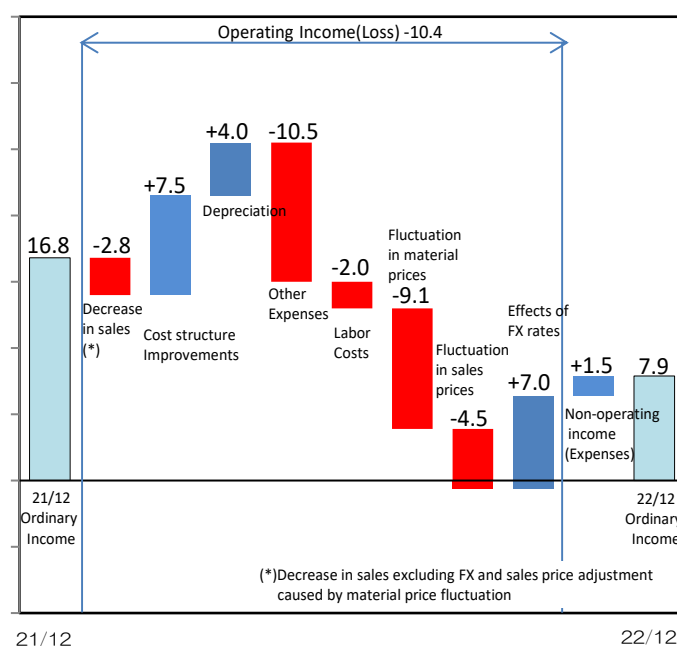
② Sales by region (Before elimination of intercompany sales)

(100Million yen)



3. Fluctuation factors of the operating/ordinary income

(100Million yen)



(*) Decrease in sales excluding FX and sales price adjustment caused by material price fluctuation

21/12 22/12

Ordinary Income(Loss) -8.9

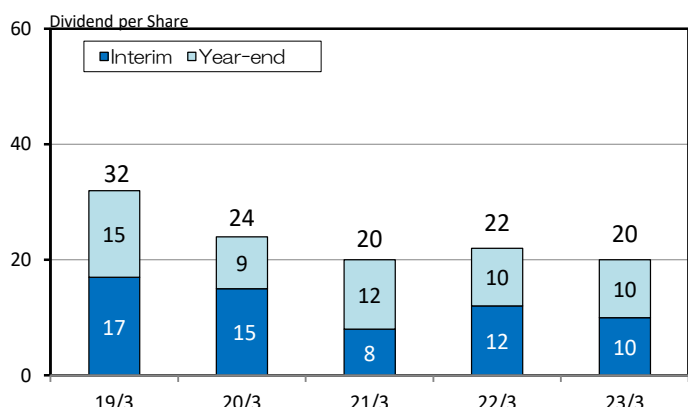
4. Consolidated Balance Sheet

(100Million yen)

	Assets			Change	Liabilities, Net assets			Change
	21.4~22.3	22.4~22.12			21.4~22.3	22.4~22.12		
Current assets	593	581	-12	Current assets	251	344	93	
Cash and deposits, securities	202	163	-39	Cash and deposits, securities	126	128	1	
Trade receivables	224	228	4	Trade receivables	41	139	98	
Inventories	145	164	19	Inventories	83	76	-6	
Others	21	25	4	Others	229	112	-117	
					211	95	-116	
					17	16	0	
					480	456	-23	
Non-current assets	550	561	11	Non-current assets	626	622	-3	
Property, plant and equipment	450	463	13	Property, plant and equipment	29	55	25	
Intangible assets	20	18	-2	Intangible assets	1	1	0	
Investments and other assets	79	79	0	Investments and other assets	5	6	1	
					663	685	22	
	1,143	1,142	-1		1,143	1,142	-1	

5. Dividends

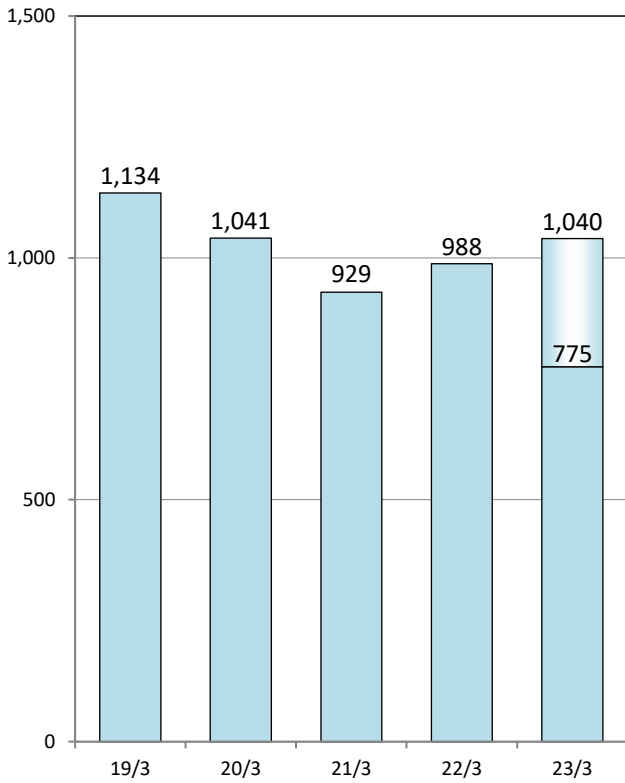
Dividend per Share (JPY)



6. Financial Results

(1) Net Sales

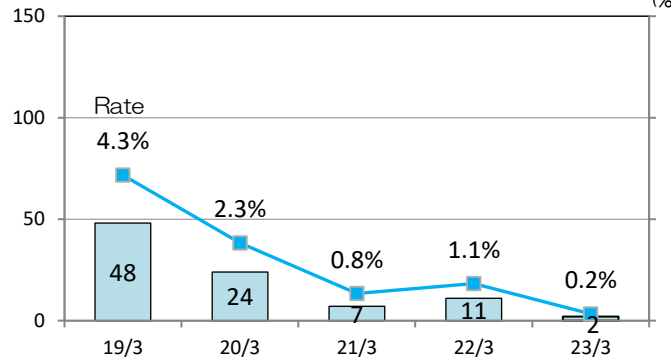
(100Million yen)



(2) Operating Income (Loss)

(100Million yen)

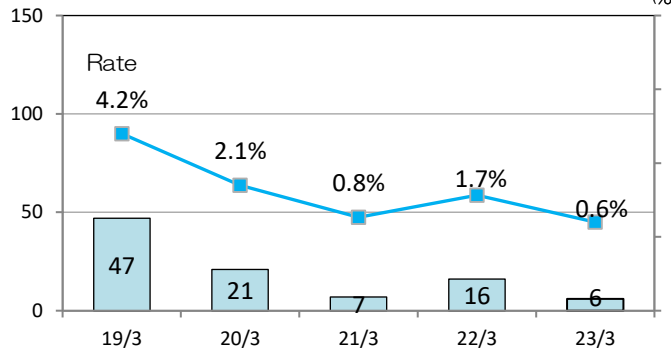
(%)



(3) Ordinary Income (Loss)

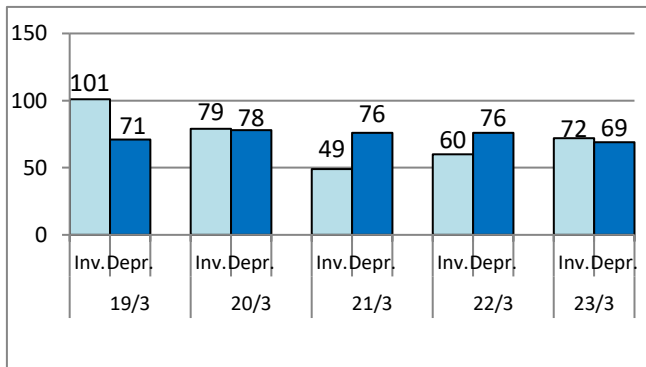
(100Million yen)

(%)



7. Capital Investment and Depreciation

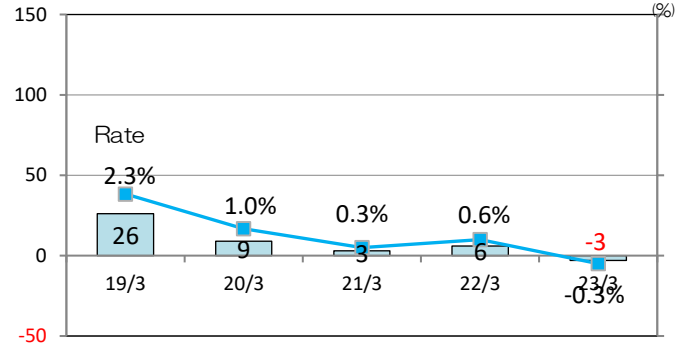
(100Million yen)



(4) Profit(Loss) Attributable to Owners of Parent

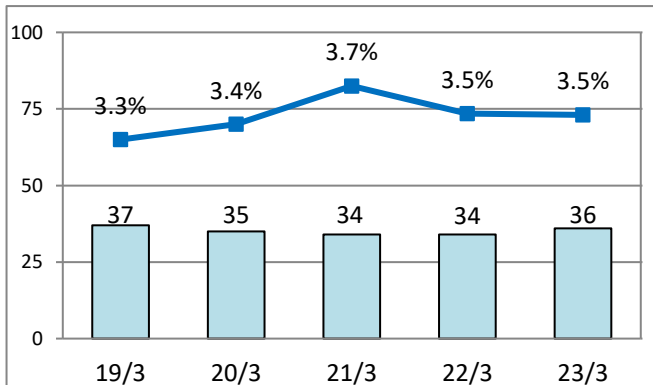
(100Million yen)

(%)



8. Research and Development Expenditure

(100Million yen)



9. Segment Information

(100Million yen)

	2021.4~ 2021.12		2022.4~ 2022.12		Increase/ Decrease	
	Net Sales	Operating Income	Net Sales	Operating Income	Net Sales	Operating Income
Automotive Parts	643	44	674	33	30	-11
Equipment	89	8	99	9	10	0
Others	1	0	1	0	-0	-0
Common costs(*)	-	-40	-	-40	-	-0
Total	734	13	775	2	40	-10

* Common costs are principally general administrative expenses not attributable to reporting segments.