

Summary of Financial Results for 1Q of FY2025

(from April 1, 2024 to June 30, 2024)

July 30, 2024
TAIHO KOGYO CO., LTD
(Code number: 6470)
(Million yen)

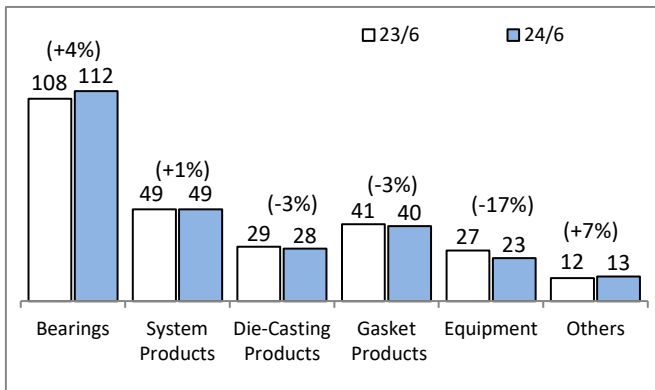
1. Consolidated Financial Results

	2023.4~2023.6		2024.4~2024.6		Increase/Decrease		2024.4~2025.3		FY2023/FY2024	
	Results	Profit rate(%)	Results	Profit rate(%)	Results	Rate of change	Forecast	Profit rate(%)	Increase/Decrease	Rate of change
Net Sales	26,867	-	26,762	-	- 105	- 0.4	118,000	-	5,956	5.3
Operating Income(Loss)	22	0.1	-84	-0.3	- 107	-	3,000	2.5	511	20.5
Ordinary Income(Loss)	502	1.9	305	1.1	- 197	- 39.3	2,900	2.5	-336	-10.4
Profit(Loss) Attributable to Owners of Parent	338	1.3	222	0.8	- 115	- 34.2	1,900	1.6	153	8.7
Foreign Exchange Rate	JPY/US\$	138	156		+18		140		-4	
	JPY/Euro	150	168		+18		150		-6	
Earnings per share(JPY)	11.75		7.71		-4.04		65.74		5.18	
Return on equity	0.5%		0.3%		-0.2%		2.7%		+0.2%	
Number of Consolidated Subsidiaries	14		14		0		14		0	

2. Summary of Sales

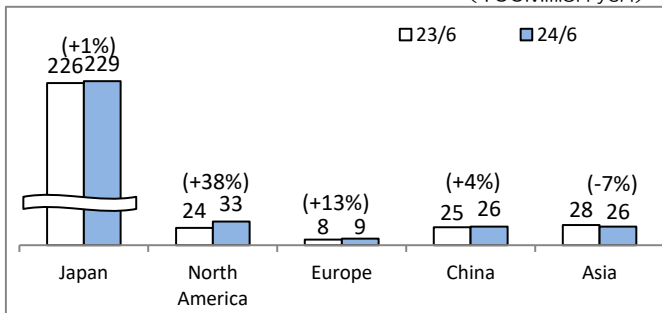
① Sales by products

(100Million yen)



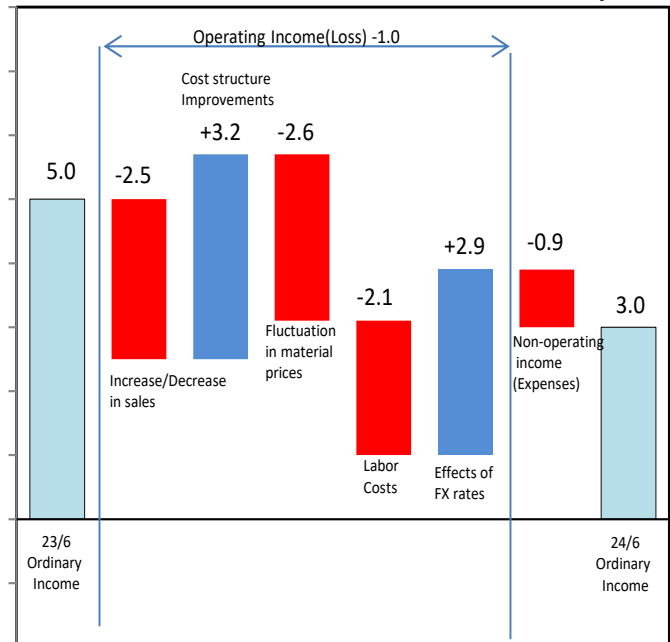
② Sales by region (Before elimination of intercompany sales)

(100Million yen)



3. Fluctuation factors of the operating/ordinary income

(100Million yen)



Ordinary Income(Loss) -1.9

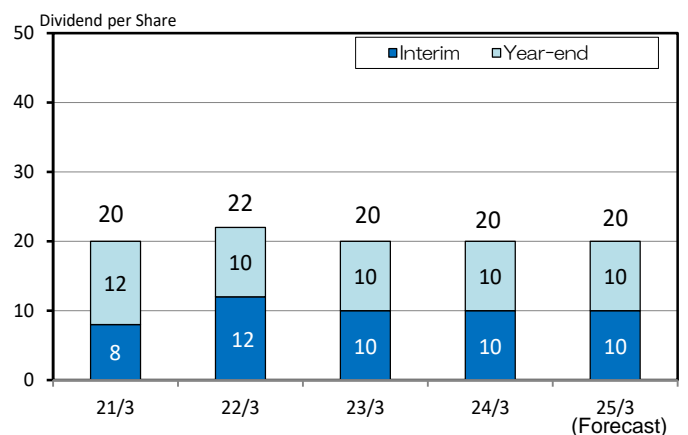
4. Consolidated Balance Sheet

(100Million yen)

Assets	2024/3			2024/6			Change	Liabilities/Net assets		
	24/3	24/6	Change	24/3	24/6	Change				
Current assets	625	710	84	Current liabilities	276	278	1			
Cash and deposits, securities	211	306	95	Trade payables	127	126	-1			
Trade receivables	230	213	-16	Short-term borrowings	52	52	0			
Inventories	160	164	4	Others	97	99	2			
Others	23	25	2	Non-current liabilities	192	268	76			
				Long-term borrowings	173	252	78			
Non-current assets	569	572	3	Others	18	16	-2			
Property, plant and equipment	447	454	6	(Total liabilities)	468	547	78			
Intangible assets	15	16	0	Shareholders' equity	635	634	0			
Investments and other assets	106	102	-3	Total accumulated other comprehensive income	83	94	10			
				Share acquisition rights	0	1	0			
				Non-controlling interests	6	6	0			
				(Total net assets)	725	736	10			
	1,194	1,283	88		1,194	1,283	88			

5. Dividends

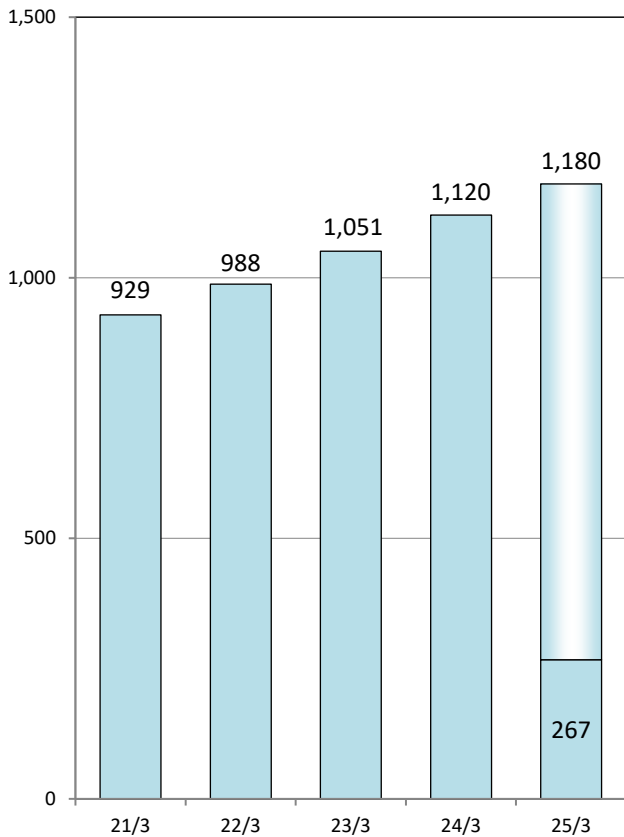
Dividend per Share (JPY)



6. Financial Results

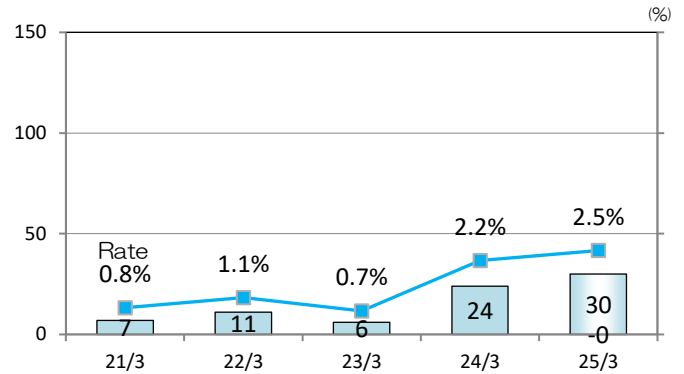
(1) Net Sales

(100Million yen)



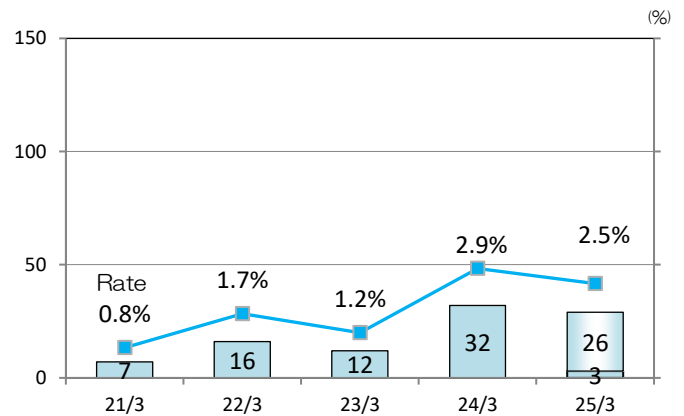
(2) Operating Income (Loss)

(100Million yen)



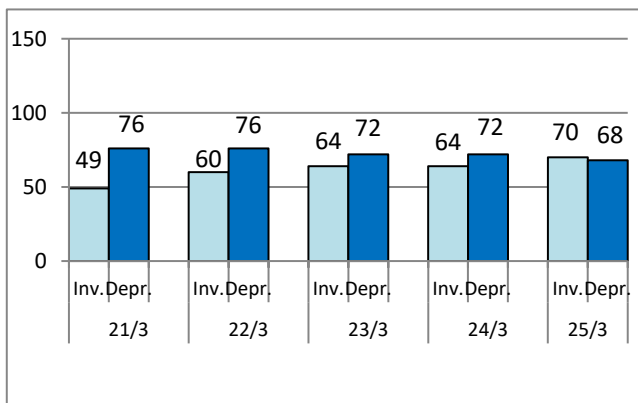
(3) Ordinary Income (Loss)

(100Million yen)



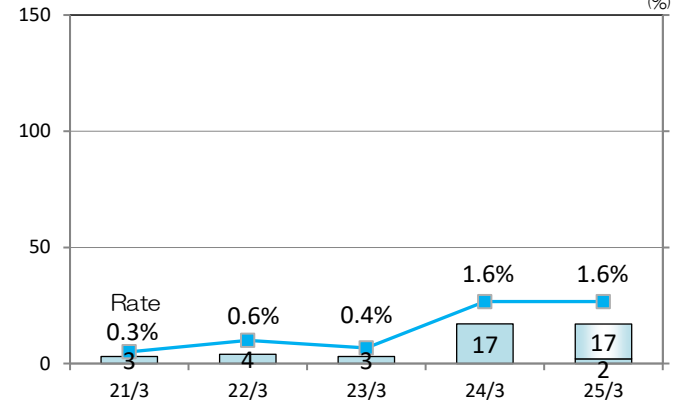
7. Capital Investment and Depreciation

(100Million yen)



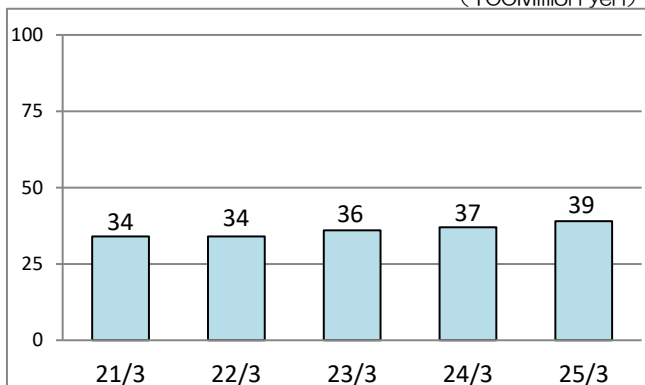
(4) Profit(Loss) Attributable to Owners of Parent

(100Million yen)



8. Research and Development Expenditure

(100Million yen)



9. Segment Information

(100Million yen)

	2023.4~2023.6		2024.4~2024.6		Increase/Decrease	
	Net Sales	Operating Income	Net Sales	Operating Income	Net Sales	Operating Income
Automotive Parts	240	11	244	11	3	-0
Equipment	27	3	23	2	-4	-1
Others	0	-0	0	-0	-0	-0
Common costs(*)	-	-14	-	-14	-	0
Total	268	0	267	-0	-1	-1

* Common costs are principally general administrative expenses not attributable to reporting segments.