

Summary of Financial Results for 2Q of FY2023

(from April 1, 2022 to September 30, 2022)

October 27, 2022
 TAIHO KOGYO CO., LTD
 (Code number: 6470)
 (Million yen)

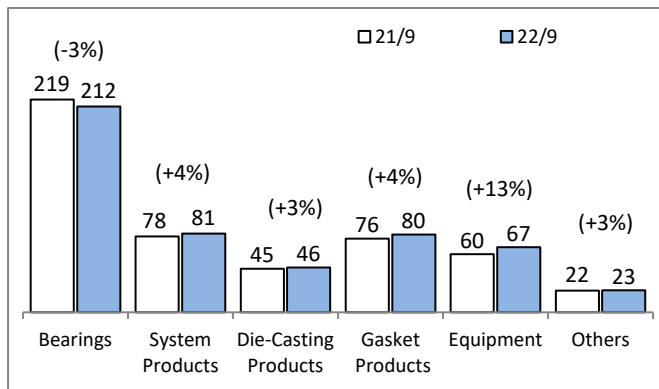
1. Consolidated Financial Results

	2021.4~2021.9		2022.4~2022.9		Increase/Decrease		2022.4~2023.3		FY2022/FY2023	
	Results	Profit rate(%)	Results	Profit rate(%)	Results	Rate of change	Forecast	Profit rate(%)	Increase/Decrease	Rate of change
Net Sales	50,170	-	51,179	-	1,009	2.0	103,000	-	4,179	4.2
Operating Income(Loss)	1,300	2.6	105	0.2	-1,195	-91.9	1,600	1.6	491	44.4
Ordinary Income(Loss)	1,534	3.1	759	1.5	-774	-50.5	2,100	2.0	449	27.3
Profit(Loss) Attributable to Owners of Parent	1,539	3.1	500	1.0	-1,038	-67.5	1,300	1.3	678	109.2
Foreign Exchange Rate	JPY/US\$	110	134	+24			130		+18	
	JPY/Euro	131	139	+8			135		+4	
Earnings per share(JPY)		53.05	17.35	-35.7			44.93		23.51	
Return on equity		2.4%	0.7%	-1.7%			2.0%		1.0%	
Number of Consolidated Subsidiaries		14	14	0			14		0	

2. Summary of Sales

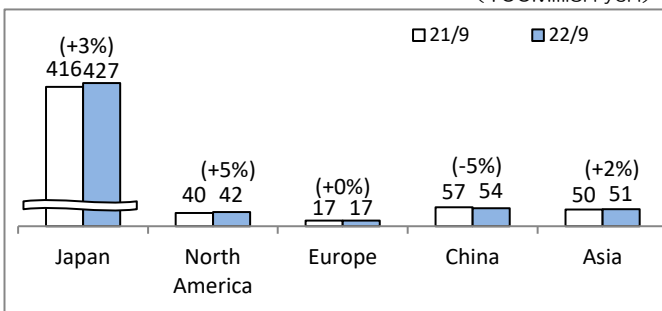
① Sales by products

(100Million yen)



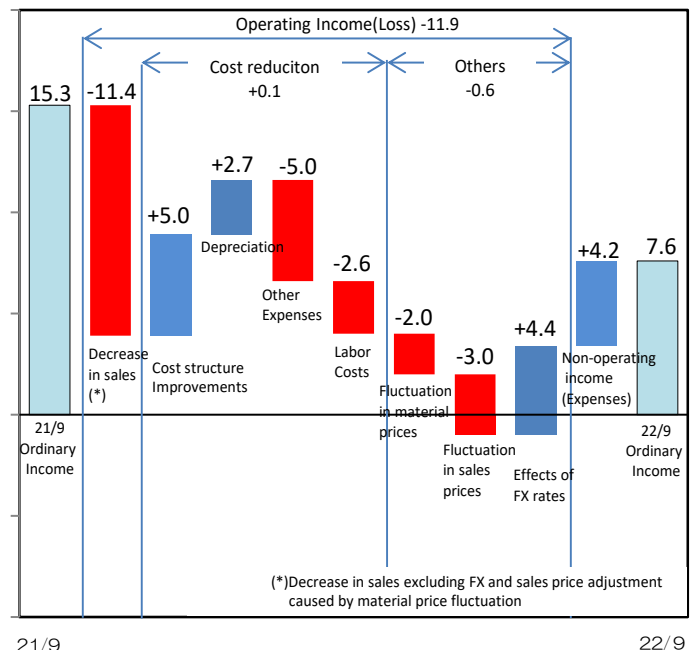
② Sales by region (Before elimination of intercompany sales)

(100Million yen)



3. Fluctuation factors of the operating/ordinary income

(100Million yen)



(*) Decrease in sales excluding FX and sales price adjustment caused by material price fluctuation

21/9 22/9

Ordinary Income(Loss) -7.7

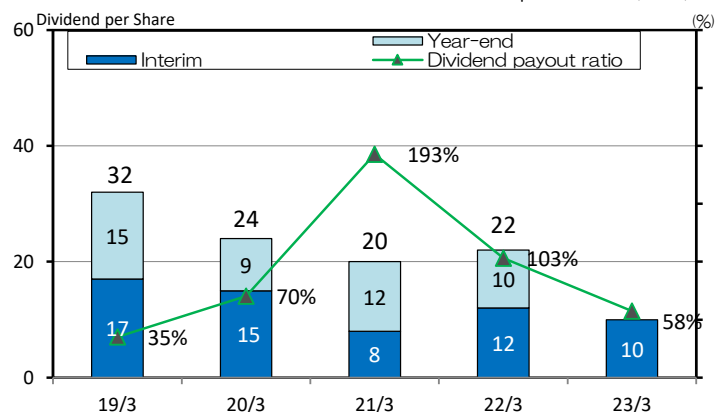
4. Consolidated Balance Sheet

(100Million yen)

	Assets			Liabilities/Net assets			
	21.4~22.3	22.4~22.9	Change	21.4~22.3	22.4~22.9	Change	
Current assets	593	609	15	Current liabilities	251	375	123
Cash and deposits, securities	202	187	-15	Trade payables	126	133	6
Trade receivables	224	233	9	Short-term borrowings	41	155	114
Inventories	145	162	17	Non-current liabilities	229	106	-122
Others	21	25	4	Long-term borrowings	211	90	-121
				Others	17	16	0
				(Total liabilities)	480	482	1
Non-current assets	550	562	12	Shareholders' equity	626	627	0
Property, plant and equipment	450	465	15	Total accumulated other comprehensive income	29	54	24
Intangible assets	20	19	-1	Share acquisition rights	1	1	0
Investments and other assets	79	77	-1	Non-controlling interests	5	6	1
				(Total net assets)	663	689	26
	1,143	1,171	27		1,143	1,171	27

5. Dividends

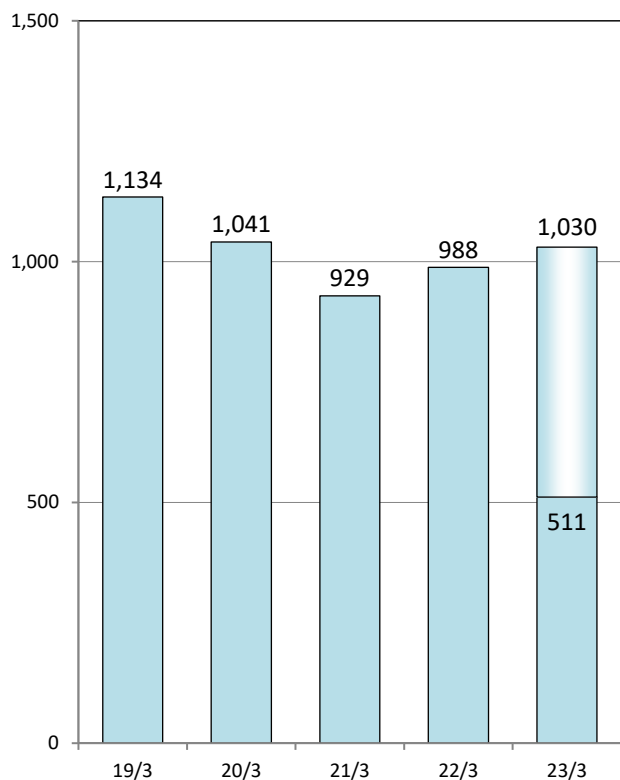
Dividend per Share (JPY)



6. Financial Results

(1) Net Sales

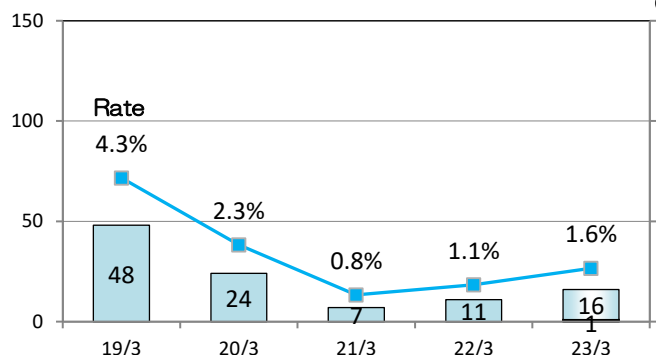
(100Million yen)



(2) Operating Income (Loss)

(100Million yen)

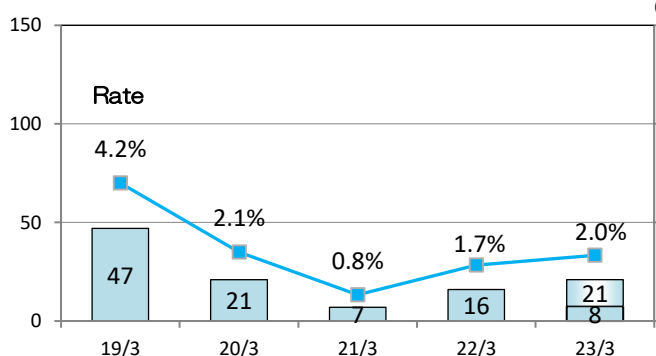
(%)



(3) Ordinary Income (Loss)

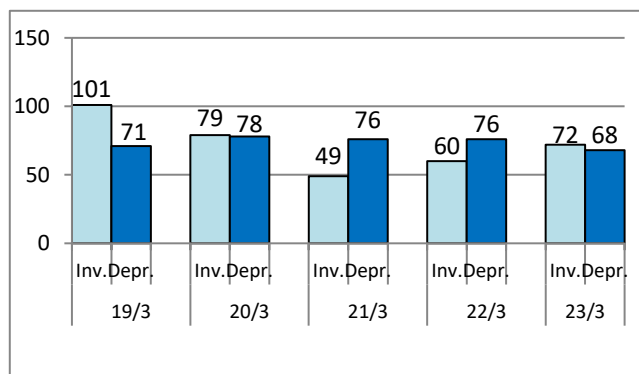
(100Million yen)

(%)



7. Capital Investment and Depreciation

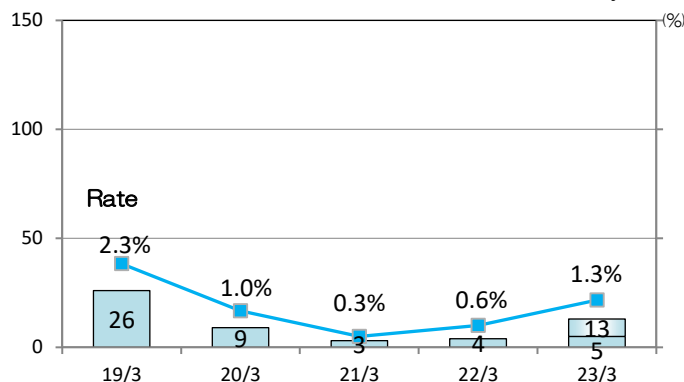
(100Million yen)



(4) Profit(Loss) Attributable to Owners of Parent

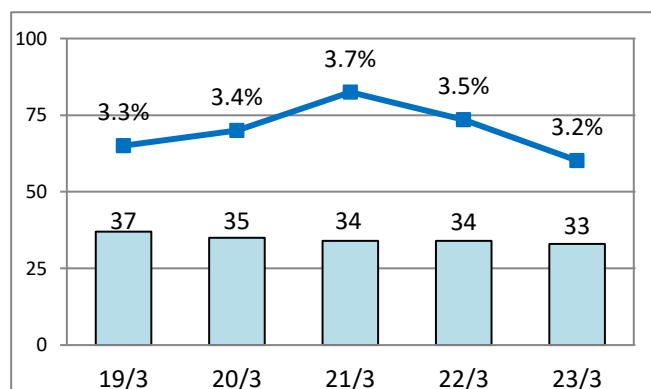
(100Million yen)

(%)



8. Research and Development Expenditure

(100Million yen)



9. Segment Information

(100Million yen)

	2021.4~ 2021.9		2022.4~ 2022.9		Increase/ Decrease	
	Net Sales	Operating Income	Net Sales	Operating Income	Net Sales	Operating Income
Automotive Parts	440	33	443	22	2	- 11
Equipment	60	6	67	5	7	- 1
Others	0	0	0	0	-0	-0
Common costs(*)	-	-27	-	-27	-	0
Total	501	13	511	1	10	- 11

* Common costs are principally general administrative expenses not attributable to reporting segments.